

M Trail Guide

# Applied Artificial Intelligence



# Letter to the Reader

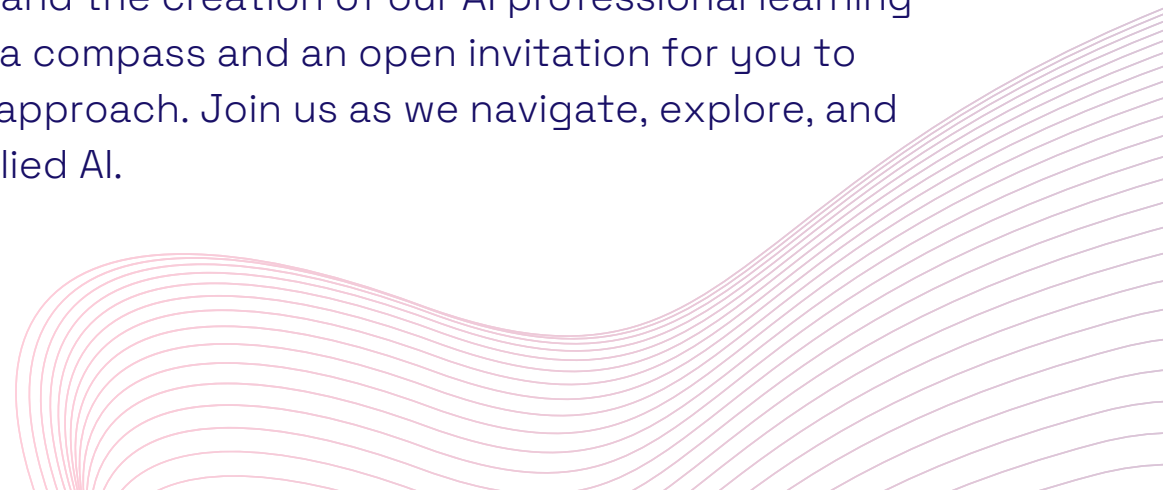
MindSpark's Applied AI (AAI) Trail Guide is designed for leaders and practitioners navigating the dynamic landscape of AI. Since 2017, MindSpark has been a forerunner in AI education, shaping the future by developing extraordinary learning experiences. The AAI Trail Guide is a testament to our expertise, reflecting our commitment to staying at the forefront of AI education.

We chose Applied AI because we believe that AI is not just a theoretical concept, but a practical tool that can improve outcomes. By using applied AI, we aim to show individuals how AI can be used to solve real problems, create new opportunities, and improve lives. We think that teaching applied AI is like teaching applied math or other subjects, where the focus is not only on the content, but also on the context and relevance of the content in the real world. We hope that by teaching applied AI, we can inspire others to embrace AI as an ally and to explore its potential with curiosity and openness.

Within the AAI Trail Guide, you'll find our core beliefs and our commitments. Each section will reveal insights and practices that shape our use of AI and the creation of our AI professional learning experiences. The AAI Trail Guide serves as both a compass and an open invitation for you to explore the principles shaping our educational approach. Join us as we navigate, explore, and learn together, harnessing the potential of Applied AI.



The MindSpark Team





# Trail Marker #1: Be Adaptive

We acknowledge the dynamic nature of AI and emphasize the importance of continually adjusting skillsets to meet evolving demands. We recognize the need for professionals to remain agile in a rapidly changing technological landscape and are committed to being flexible, resilient, and open-minded.



**Experience is our coach.** We commit to learning from our experiences. These learning experiences serve as insightful coaches, offering continuous guidance and wisdom as we navigate the path of development and improvement.

**Don't be scared of the dark.** We commit to embracing AI as an ally, dispelling fears, and exploring its potential with curiosity and openness.

**Pivot intentionally.** We're committed to being flexible and trying new approaches. When things change, we make purposeful adjustments and measure our progress.



## Trail Marker #2: Be Human Centric



We acknowledge that focusing on the human aspect of AI creation is crucial. We recognize a thoughtful approach, ensuring that the use of AI in education respects human values and addresses concerns related to ethics and bias.

**Model responsible stewardship.** We commit to preserving the human touch in the application of AI, ensuring that human expertise drives accountability, validates accuracy, and mitigates inequities.

**Empathy in action.** We commit to integrating diverse perspectives, needs, and values that personalize the human experience. We create adaptive learning experiences tailored to preferences, abilities, and progress.

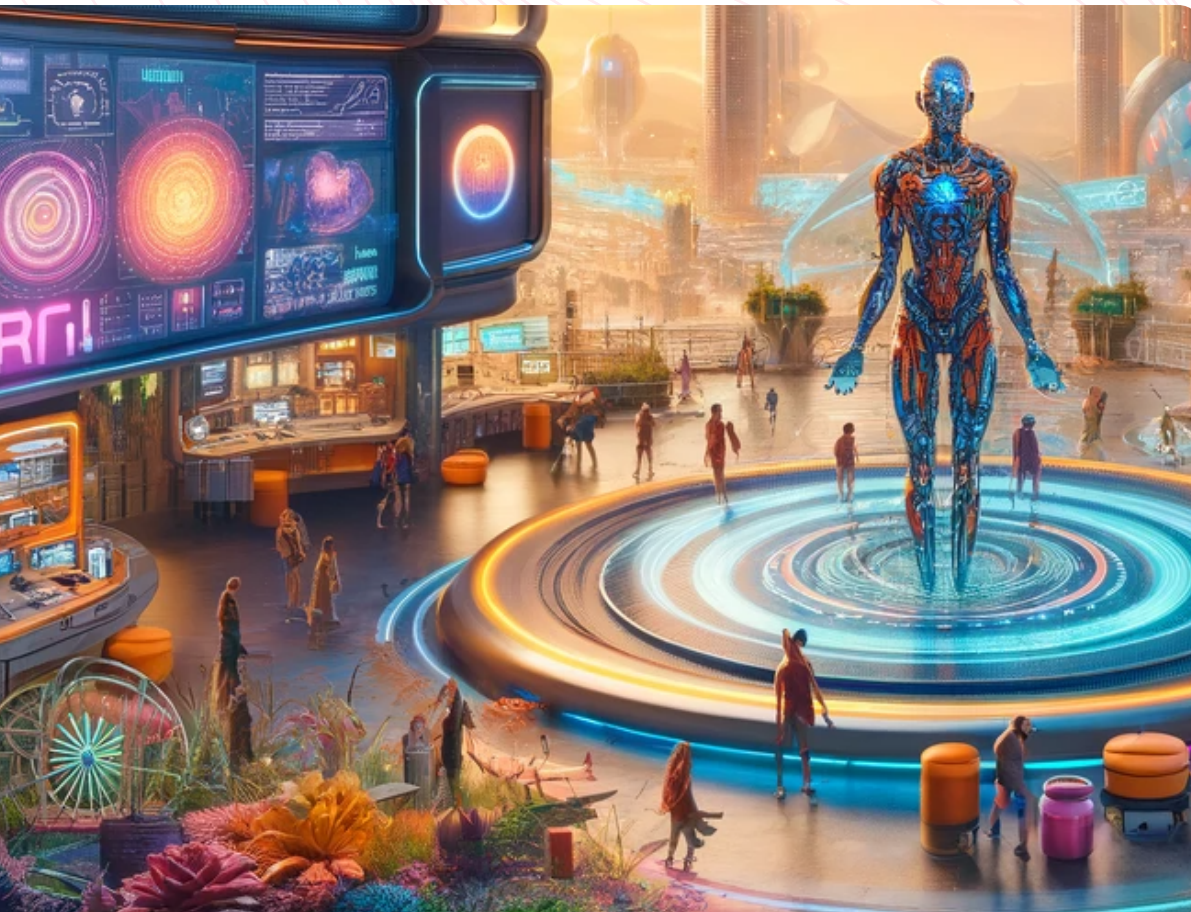
**Practice the art of reflective listening.** We assess the success of AI by its contribution to human flourishing, not just technical performance. AI can be an invaluable aid, enabling users to engage in more meaningful activities.





## Trail Marker #3: Be Collaborative

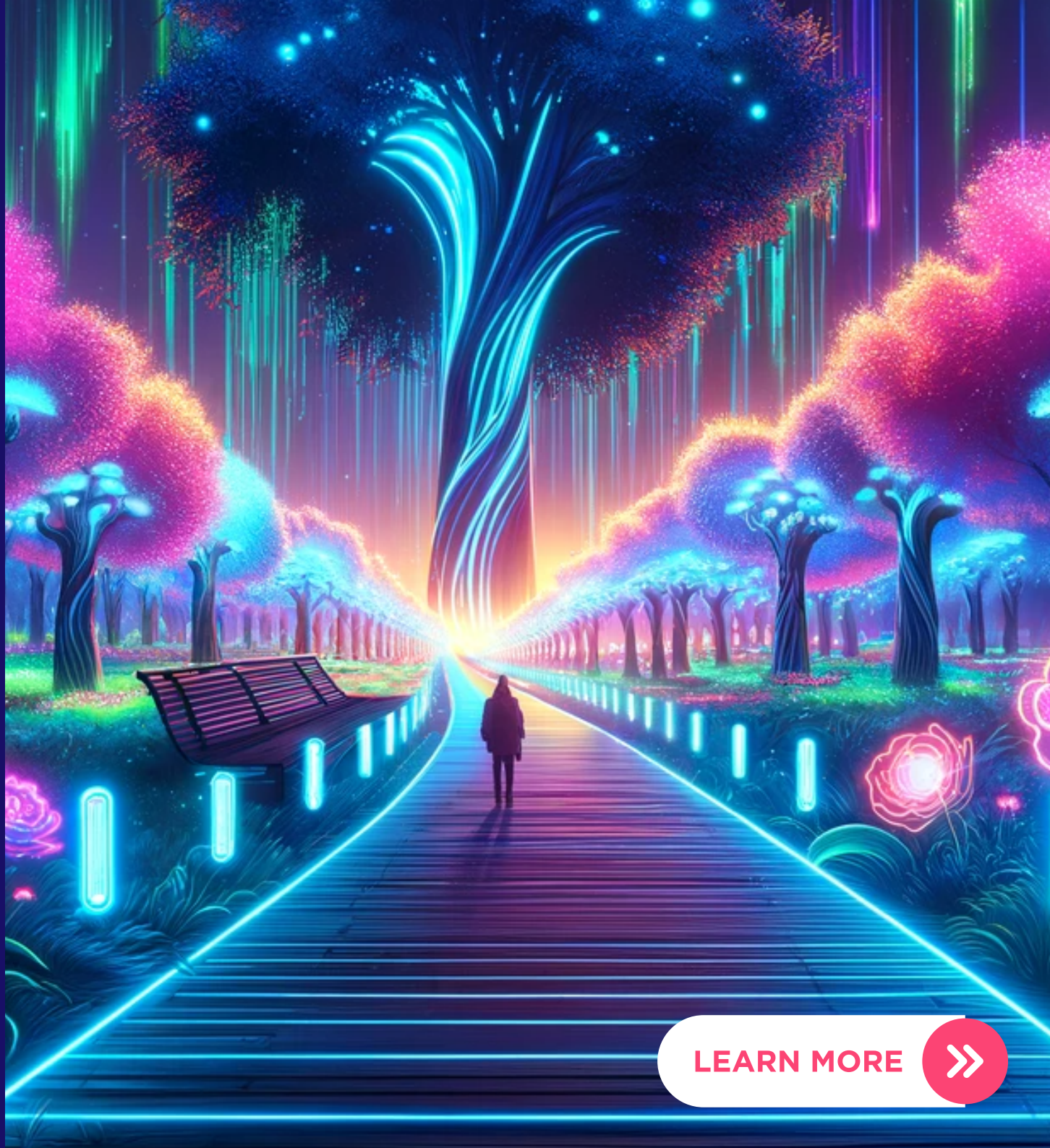
We acknowledge that collaboration is key. We recognize the importance of bringing others along on the learning journey, fostering a collaborative environment where professionals can share knowledge and support each other.



**AI as a thought partner.** We commit to treating AI as an integral part of the team, utilizing its capabilities as an extra team player in our collaborative endeavors. We use AI to foster creativity and innovation.

**Play together, grow together.** We commit to using collaborative play as a tool to foster connection, trust, and belonging among ourselves and those we serve. We create a space where we can explore our imagination and potential.

**Practice the art of reflective listening.** We wholeheartedly commit to understanding others (and AI) deeply, exploring their perspectives and motivations to enrich our collective experience.



[LEARN MORE](#) 